

Late To The Party.... But Making Up For Lost Time!



**The Western New York & Pennsylvania Railroad's
Quest For A Piece Of The Marcellus Pie**

Dan Eagan

VP – Marketing & Sales

Western New York & Pennsylvania Railroad, LLC

May 19, 2011

WNYP

Interchanges and Operations Center



PGE Site – Port Allegany, PA



PGE - Cutting In the Switch



PGE Track Construction



PGE - First Shipment



PGE Long-Term Impact On The WNYP

- Nearly 300,000 acres of owned gas rights
 - Full Production – 1000 Wells Per Year
 - 3000 Carloads of Sand
 - 200 - 300 Carloads Pipe
 - Brine Water ?

Lansberry / Port Allegany



Port Allegany

- » **Multiple Customer Service Site**
 - » **16 – 18 Car Capacity**
 - » **2X Per Day Switching**
 - » **24/7 Operation (as needed)**
 - » **Scales On Site**

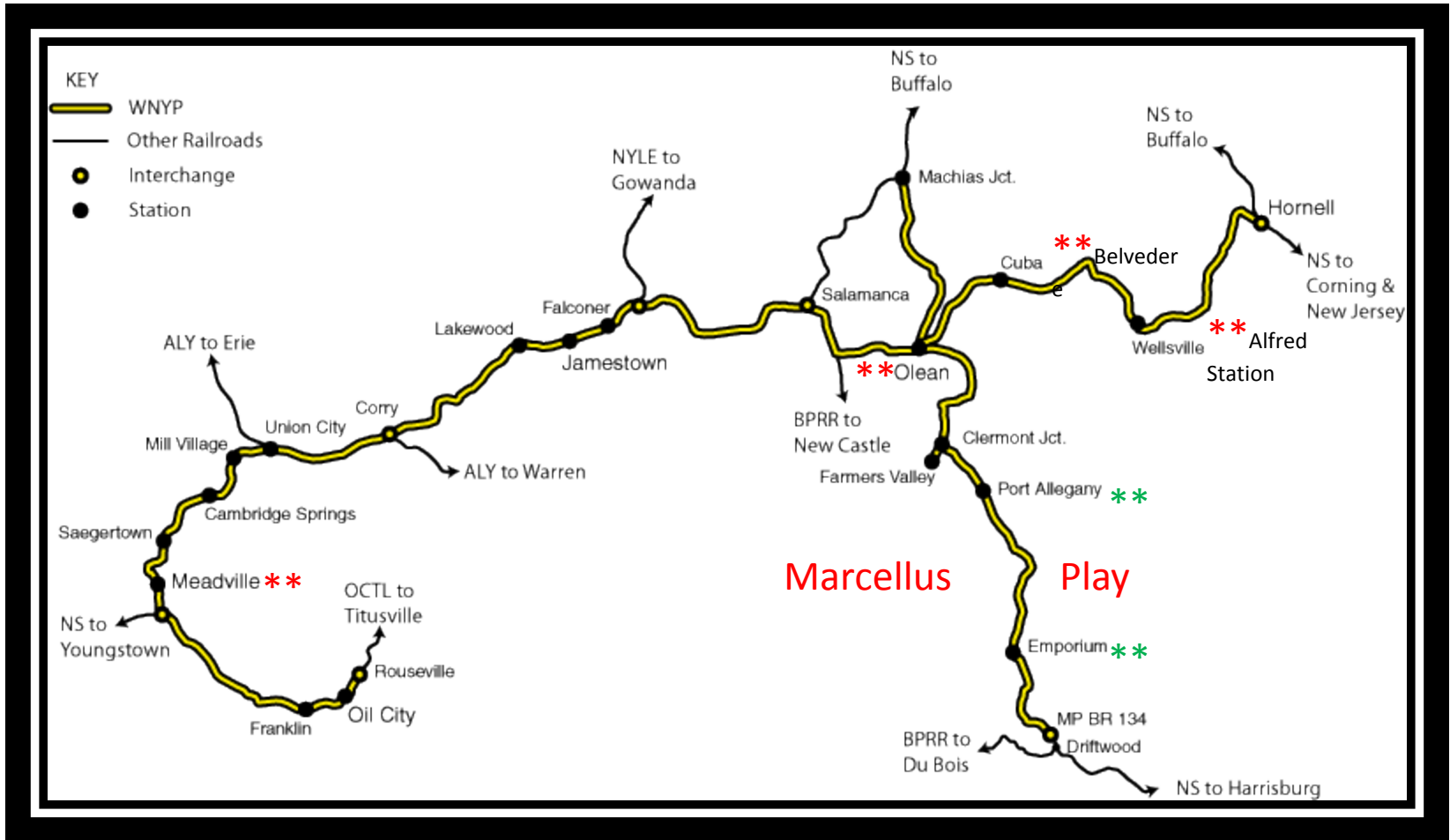
Schlumberger / Emporium PA



Total Economic Impact To WNYP and the Community

- » Growth In Carload Business
 - 2011 Projected – 2000 + Carloads
- » Rail Infrastructure Improvements & Investments
 - Main Line Upgrades
 - Public & Private Sidings
- » Railroad Jobs - WNYP
 - 5
- » Non-Railroad Jobs
 - 25 non-trucking
- » Local economy
 - Fuel, Food, Hardware, Hospitality, Royalties
- » = Stability

WNYP Route Map & Future Transload Sites



Olean, NY



Olean NY

- » 20 + Acres
- » Remediated Brownfield Site
- » Owner - ExxonMobil
- » Rail Access – Needs Siding
- » Just off I-86 @ Buffalo St. Exit
- » At East End Of Olean Yard

Belvedere, NY



Belvedere/Belmont, NY

- » ½ Mile From Route 19 Exit I-86
- » 6 acres
- » Existing Siding (Can Be Lengthened)

Alfred Station, NY



Alfred Station, NY

- » 10 Minutes From Andover Exit I-86
- » Approx 25 Acres
- » No Siding
- » Owned By Buffalo Crushed Stone
 - Division Of New Enterprise Stone & Lime

Ancillary Rail Business

» Brine Water

» Aggregates

» Pipe

Working With Our Class 1 Partner



...And Our Friends



We Won't **Crash**



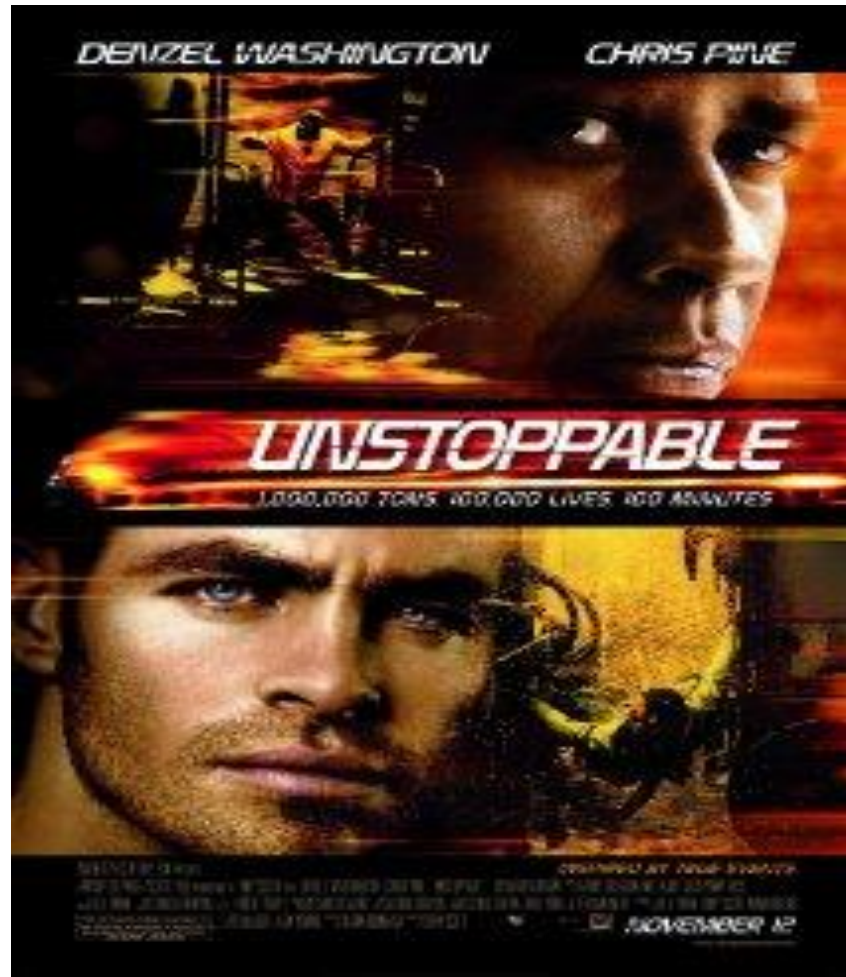
...Or **BURN.**



Just Staying On TRACK



We are **“UNSTOPPABLE”**



Dan Eagan
V.P. – Marketing & Sales

Livonia Avon & Lakeville Railroad, Inc.

B&H Rail Corp

Western New York & Pennsylvania Railroad, LLC

