

PENNSYLVANIA RAIL FREIGHT SEMINAR

MAY 18, 2011

R.J. CORMAN RAILROAD COMPANY/PENNSYLVANIA LINES INC.

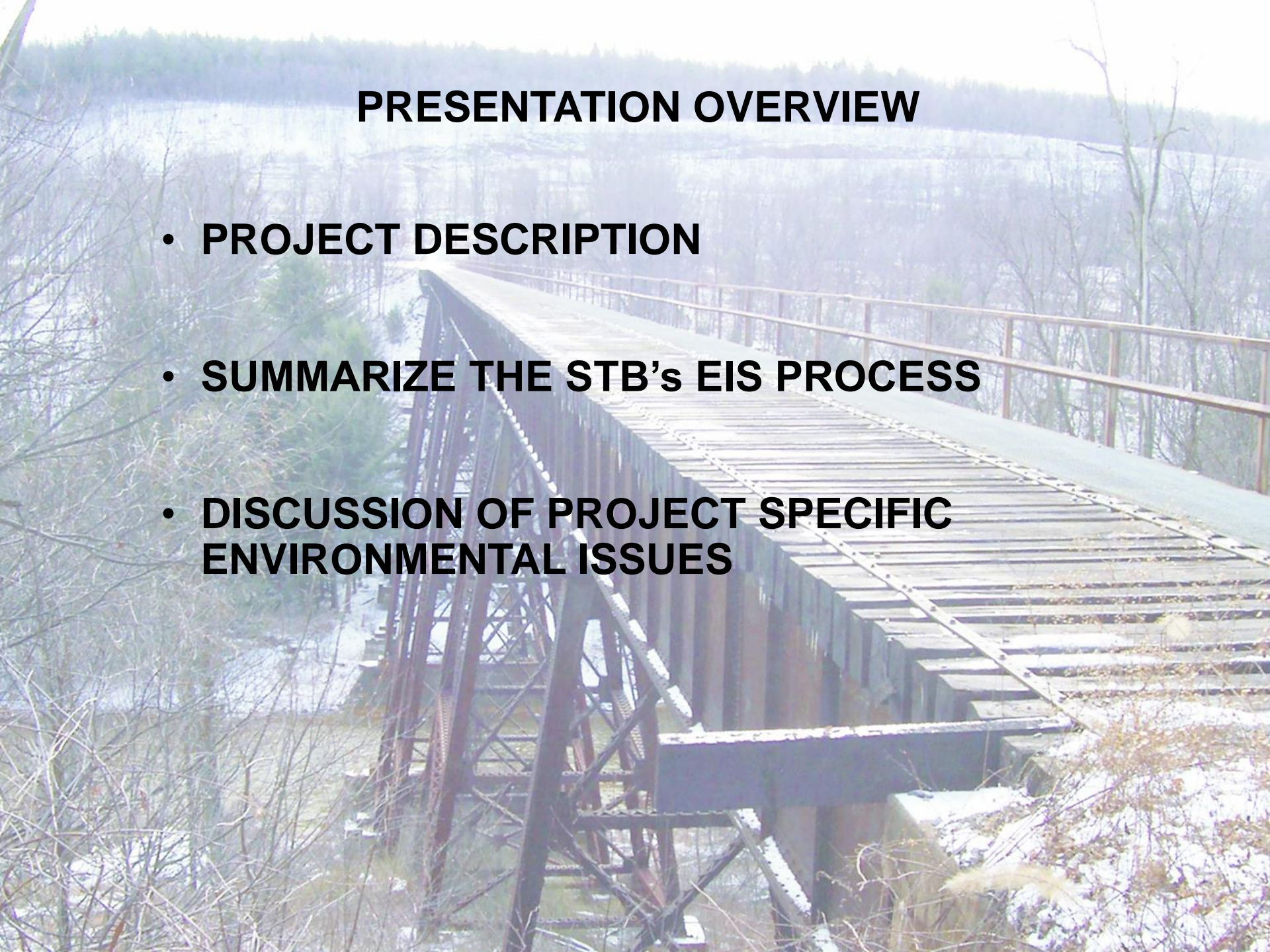
BEECH CREEK BRANCH LINE PROJECT

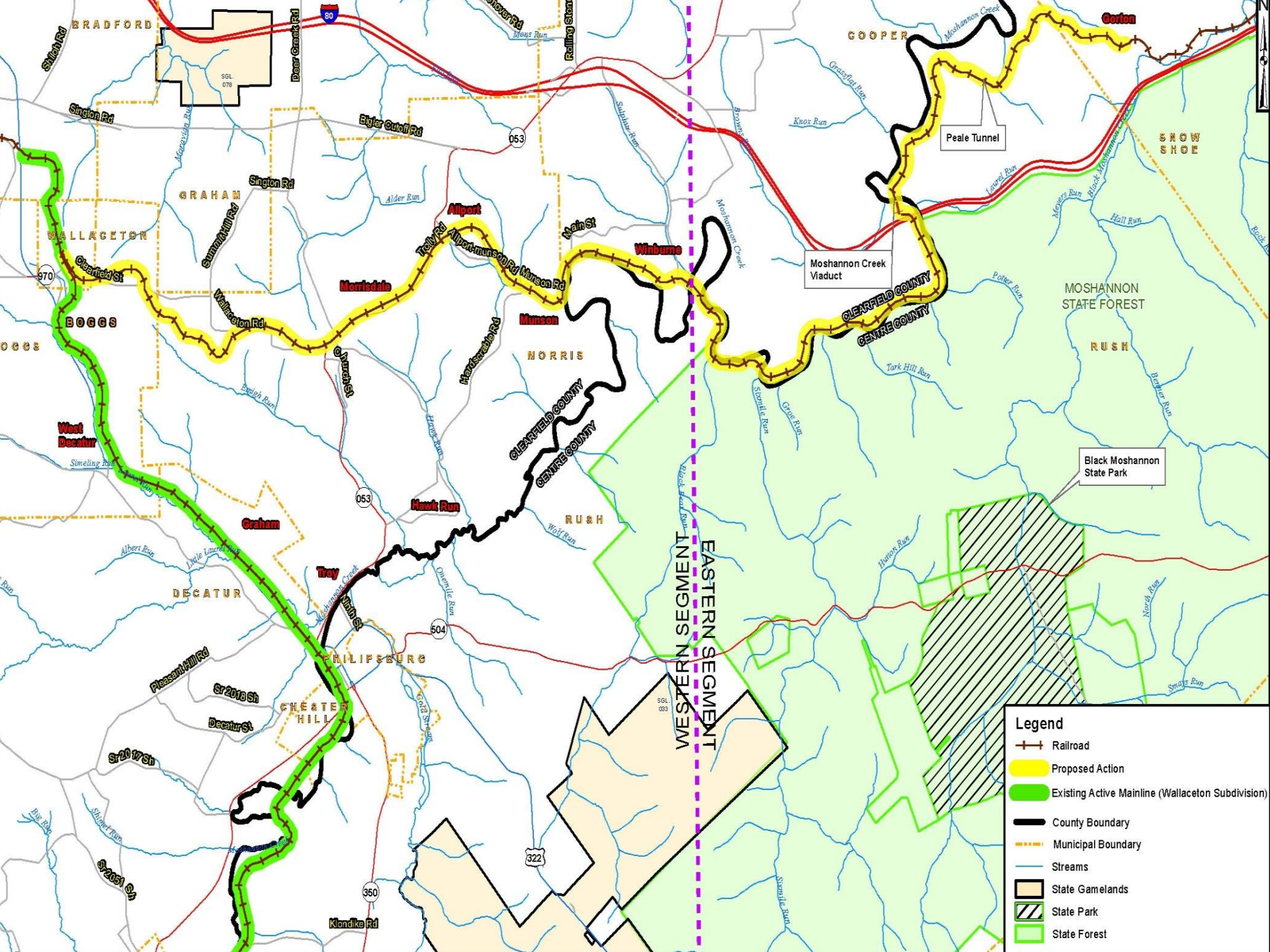
CLEARFIELD AND CENTRE COUNTIES, PENNSYLVANIA



PRESENTATION OVERVIEW

- **PROJECT DESCRIPTION**
- **SUMMARIZE THE STB's EIS PROCESS**
- **DISCUSSION OF PROJECT SPECIFIC ENVIRONMENTAL ISSUES**





Legend

- Railroad
- Proposed Action
- Existing Active Mainline (Wallaceton Subdivision)
- County Boundary
- Municipal Boundary
- Streams
- State Gamelands
- State Park
- State Forest





01/03/2008



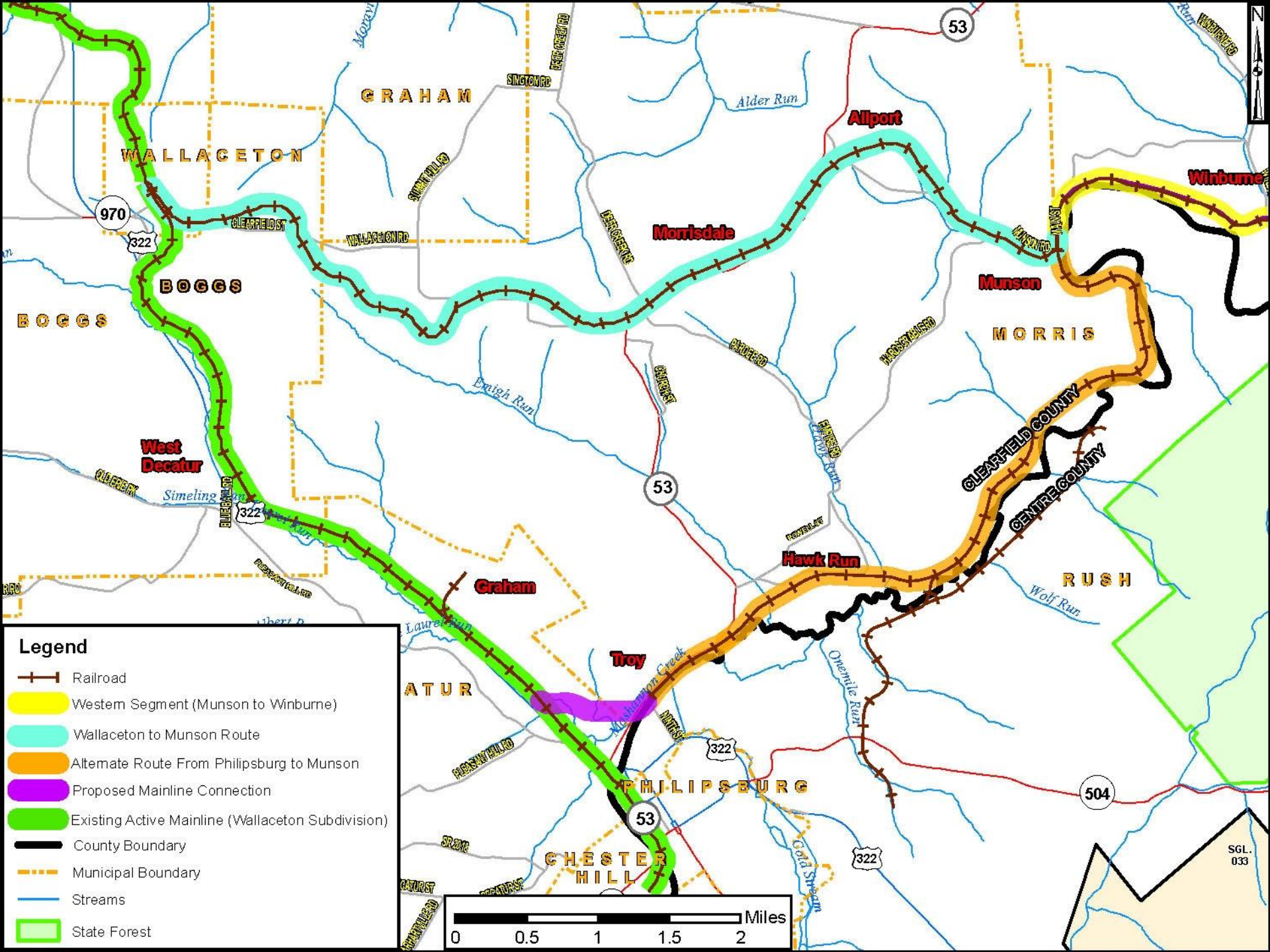


01/03/2008

SLOW DOWN
GATE BOLLARDS
AHEAD

PROTECTED
LAND BY
MEMBERSHIP
ONLY





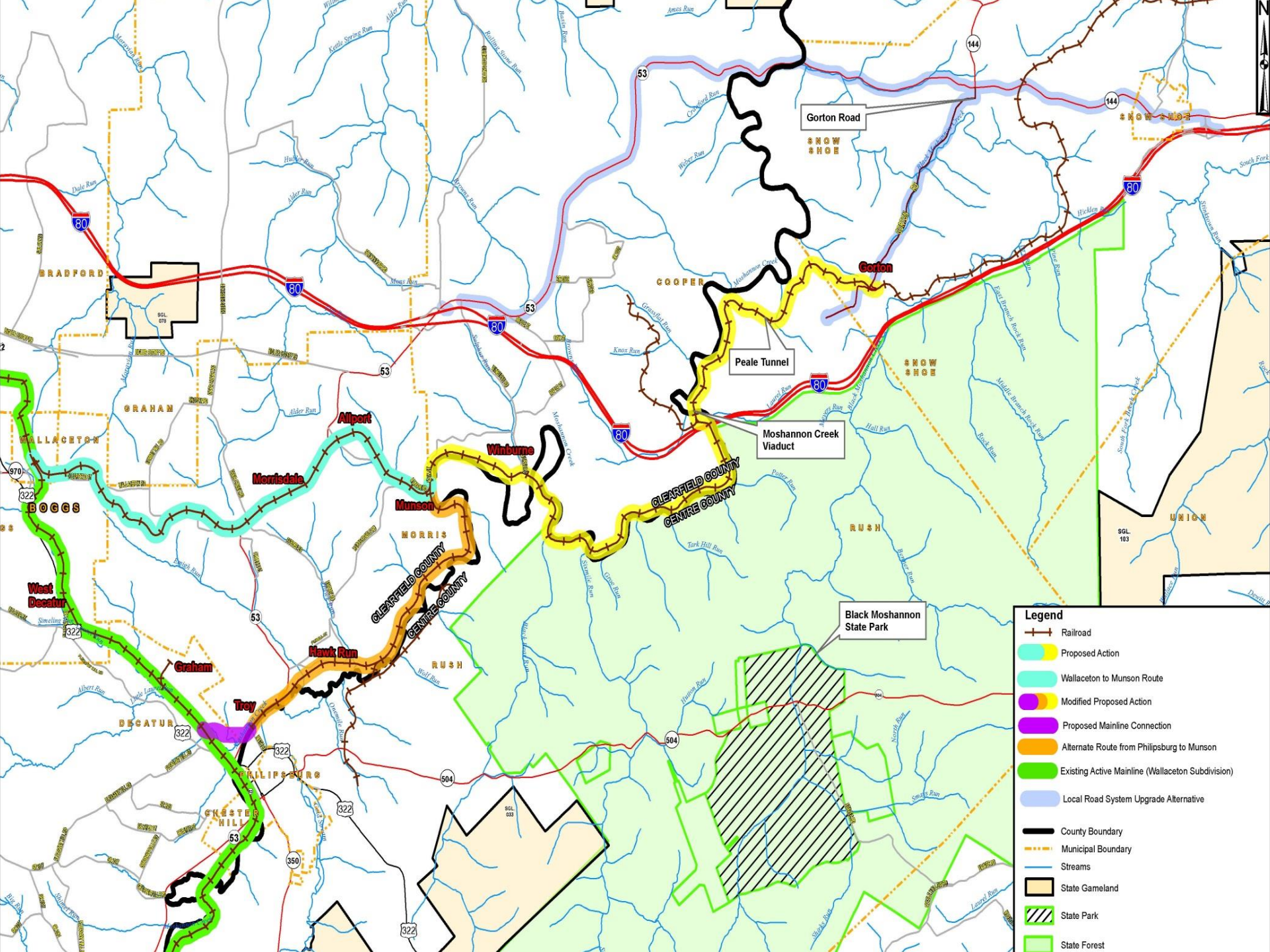
Legend

-  Railroad
-  Western Segment (Munson to Winburne)
-  Wallaceston to Munson Route
-  Alternate Route From Philipsburg to Munson
-  Proposed Mainline Connection
-  Existing Active Mainline (Wallaceton Subdivision)
-  County Boundary
-  Municipal Boundary
-  Streams
-  State Forest



SGL 033





Legend

- Railroad
- Proposed Action
- Wallaceton to Munson Route
- Modified Proposed Action
- Proposed Mainline Connection
- Alternate Route from Philipsburg to Munson
- Existing Active Mainline (Wallaceton Subdivision)
- Local Road System Upgrade Alternative
- County Boundary
- Municipal Boundary
- Streams
- State Gameland
- State Park
- State Forest

Gorton Road

Gorton

Peale Tunnel

Moshannon Creek Viaduct

Black Moshannon State Park

Allport

Winburne

Munson

Hawk Run

Graham

Troy

PHILIPSBURG

GHESTER HILLS

BRADFORD

GRAHAM

WALLACETON

BOGGS

West Decatur

DECATUR

COOPER

RUSH

UNION

SNOW SHOE

SNOW SHOE

SGL 103

SGL 032

SGL 032

SGL 032

144

144

80

53

80

80

80

53

322

322

322

504

322

350

322

53

80

80

970

322

322

322

322

322

504

322

350

322

53

80

80

970

322

322

322

322

322

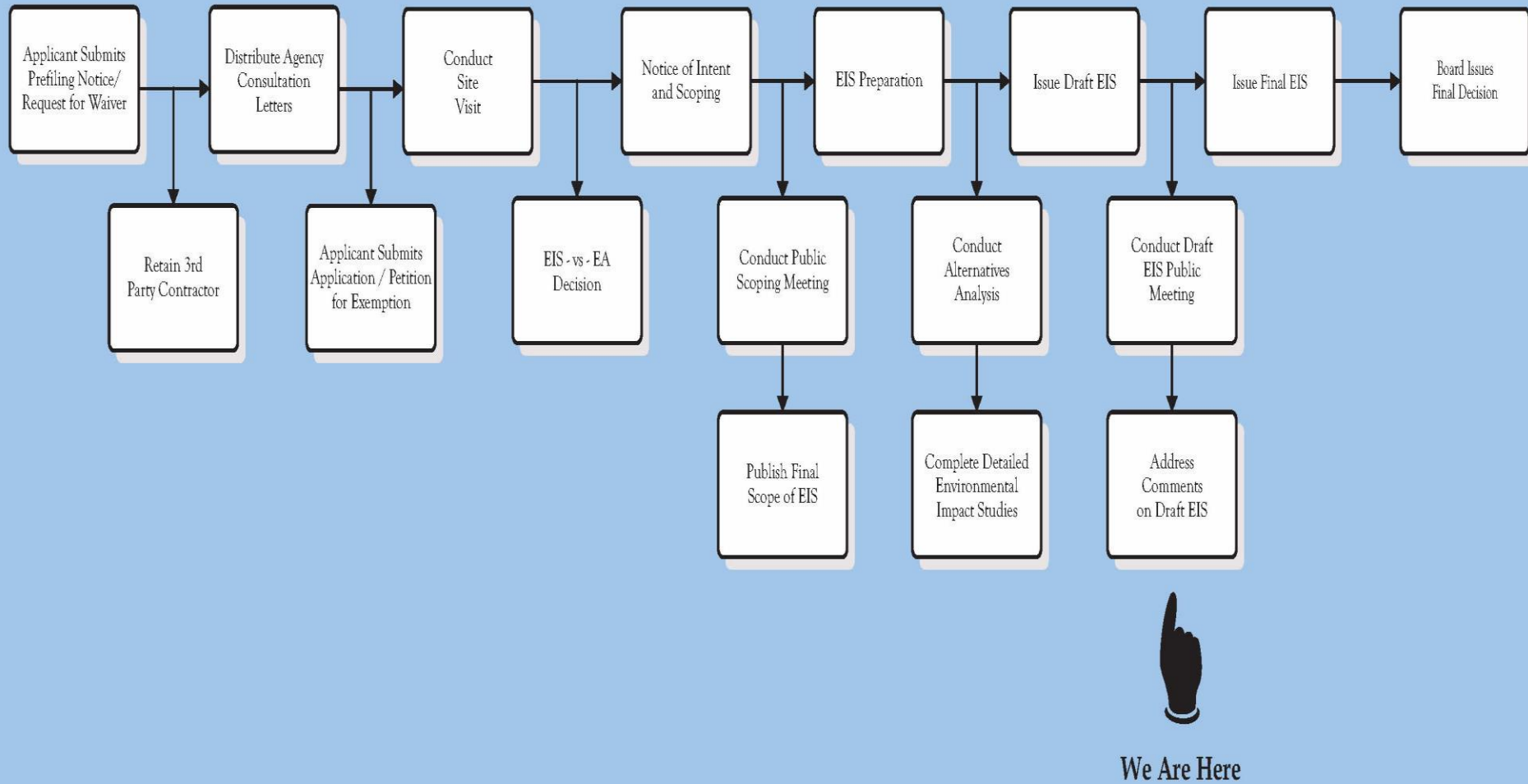
504

322

350

322

The Surface Transportation Board's Environmental Impact Statement (EIS) Process



ENVIRONMENTAL RESOURCE CATEGORIES EVALUATED IN THE DRAFT EIS

- **TRANSPORTATION AND SAFETY**
- **LAND USE**
- **ENERGY RESOURCES**
- **AIR QUALITY**
- **NOISE AND VIBRATION**
- **BIOLOGICAL RESOURCES**
- **WATER RESOURCES**
- **SOCIOECONOMICS**
- **ENVIRONMENTAL JUSTICE**
- **GEOLOGY AND SOILS**
- **HAZARDOUS WASTE SITES/MATERIALS TRANSPORT**
- **CULTURAL/HISTORIC RESOURCES**

PROJECT SPECIFIC ENVIRONMENTAL ISSUES

- **RAIL BANKING/RECREATION/ECONOMIC IMPACTS**
- **CONNECTED ACTION**
- **NIMBYISM**





QUESTIONS?