

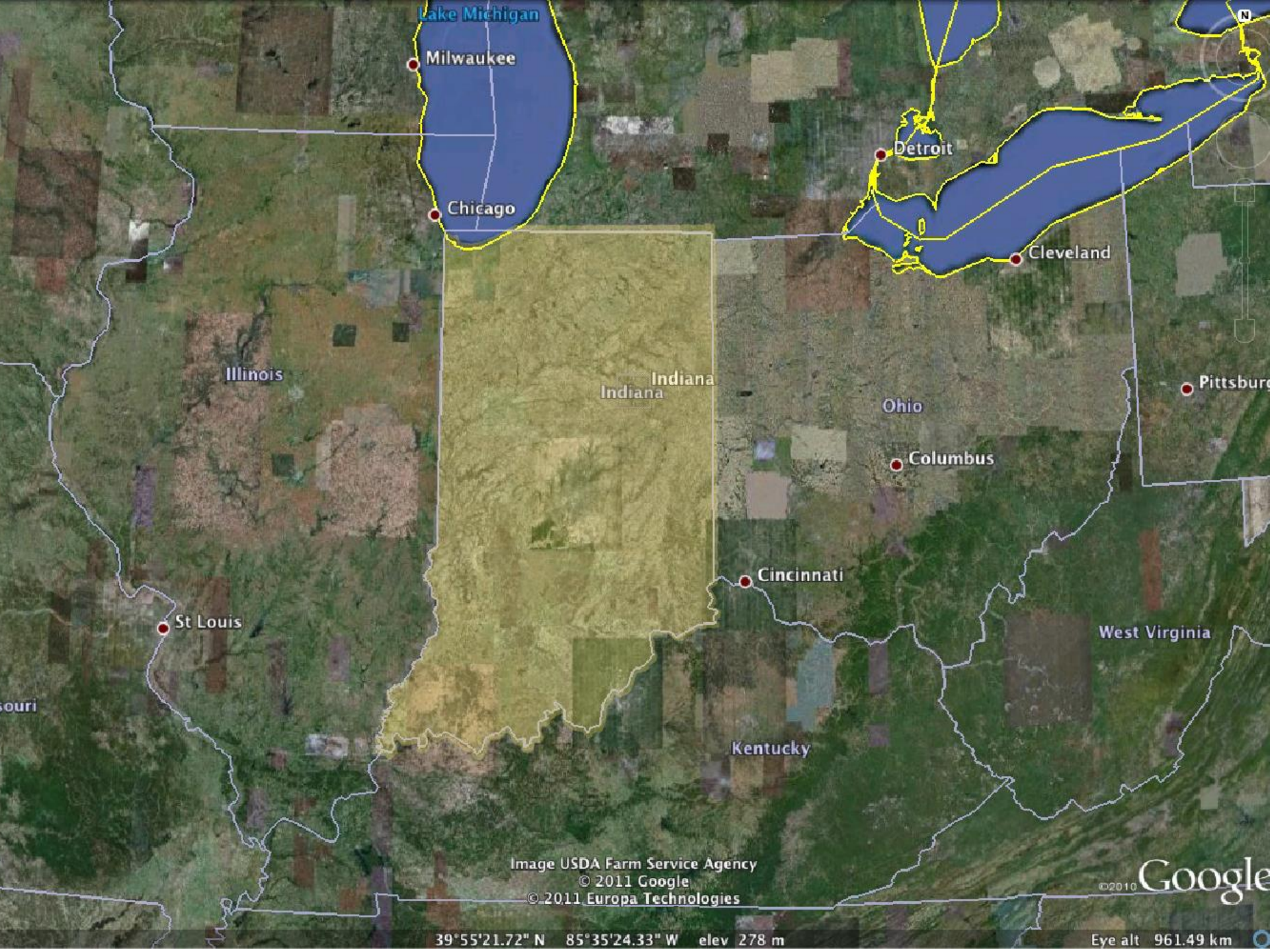
The Build-in to Bear Run

Peter J. Ray

Vice President, Engineering

The Indiana Rail Road Company





Lake Michigan

Milwaukee

Chicago

Detroit

Cleveland

Illinois

Indiana

Ohio

Columbus

Pittsburgh

St Louis

Cincinnati

West Virginia

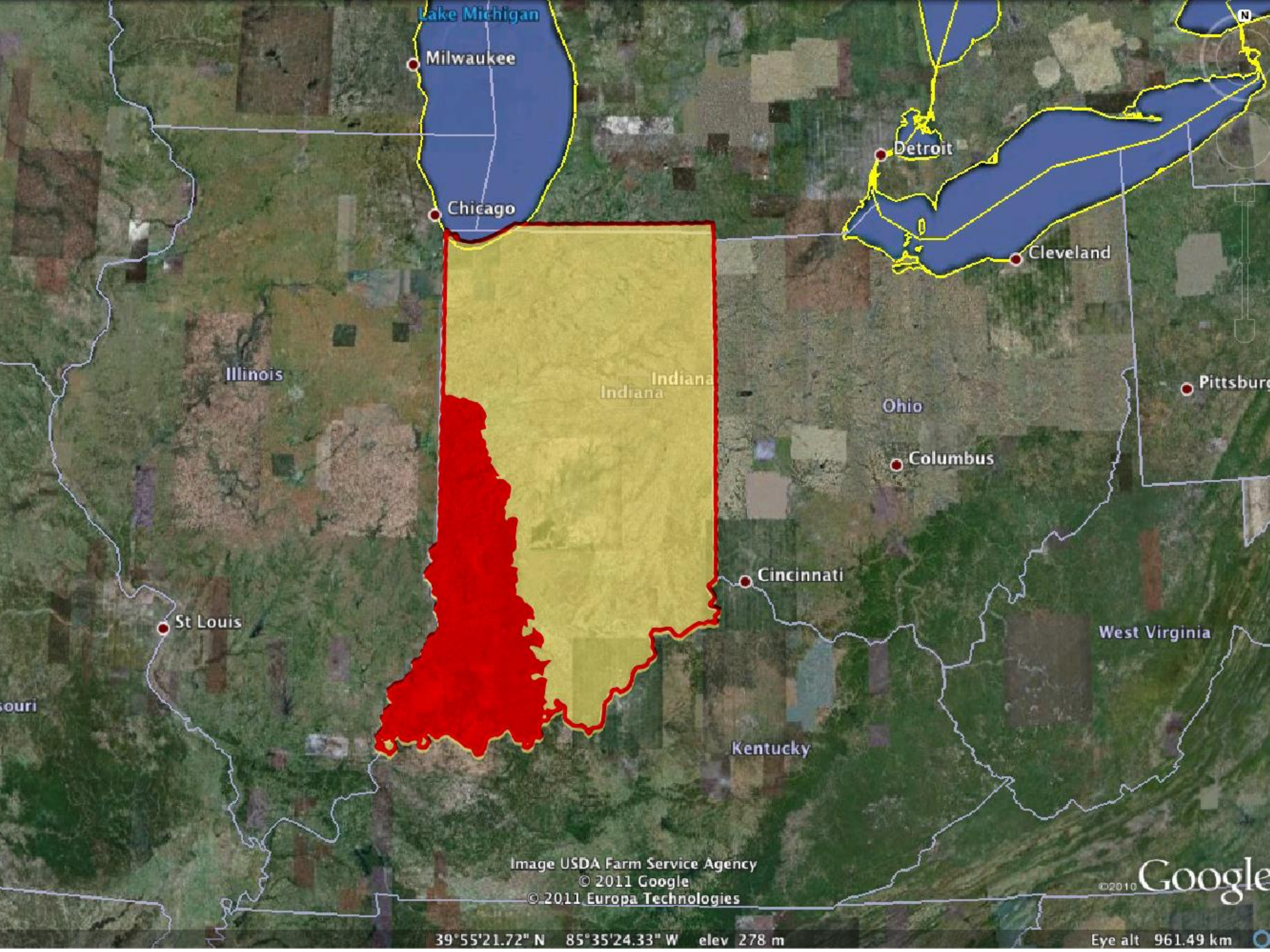
Kentucky

Image USDA Farm Service Agency
© 2011 Google
© 2011 Europa Technologies

©2010 Google

39°55'21.72" N 85°35'24.33" W elev 278 m

Eye alt 961.49 km



Lake Michigan

Milwaukee

Chicago

Detroit

Cleveland

Illinois

Indiana

Ohio

Columbus

Pittsburgh

St. Louis

Cincinnati

West Virginia

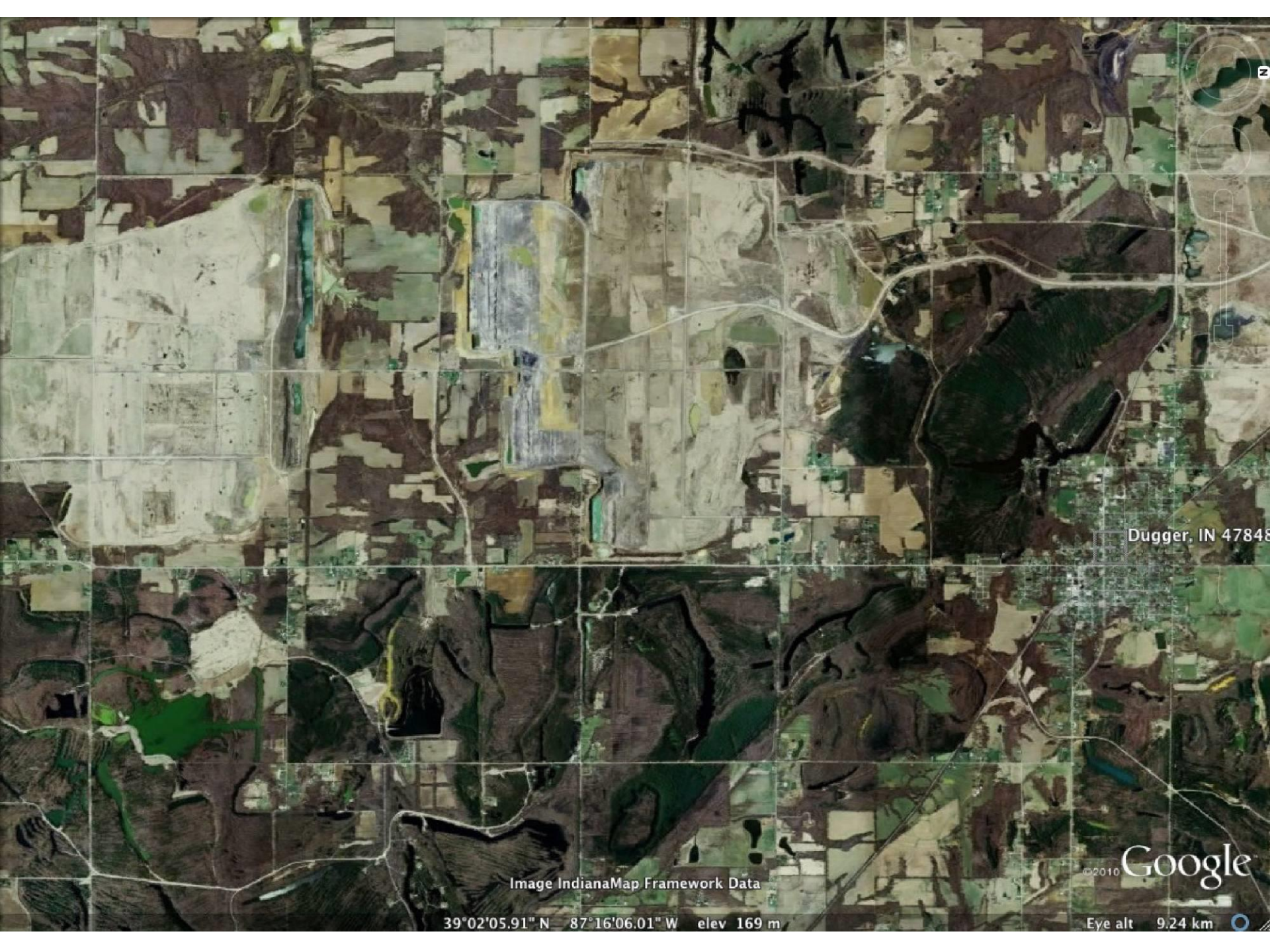
Kentucky

Image USDA Farm Service Agency
© 2011 Google
© 2011 Europa Technologies

©2010 Google

39°55'21.72" N 85°35'24.33" W elev 278 m

Eye alt 961.49 km



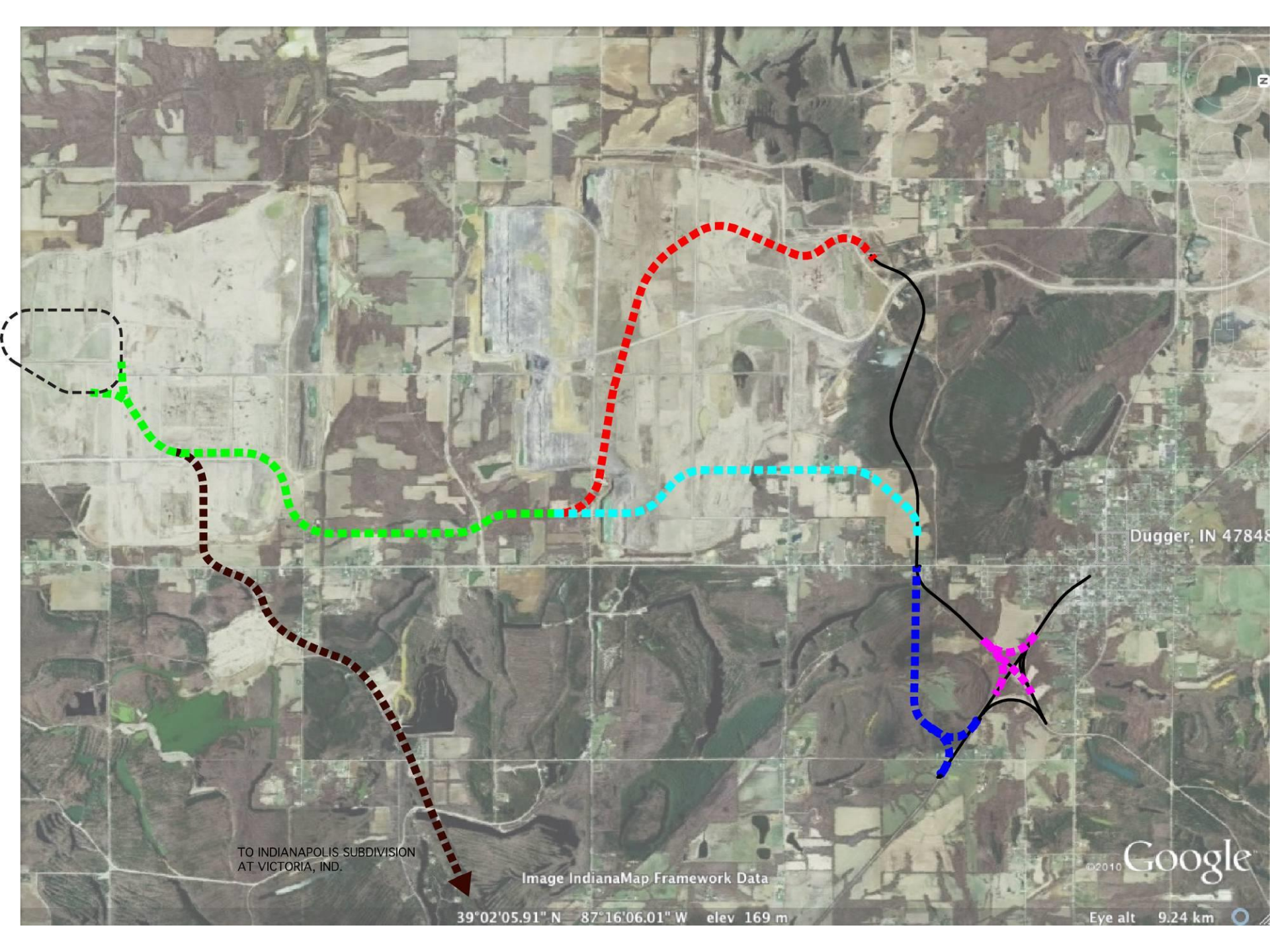
Dugger, IN 47848

Image IndianaMap Framework Data

©2010 Google

39°02'05.91" N 87°16'06.01" W elev 169 m

Eye alt 9.24 km



Dugger, IN 47848

TO INDIANAPOLIS SUBDIVISION
AT VICTORIA, IND.

Image IndianaMap Framework Data

©2010 Google

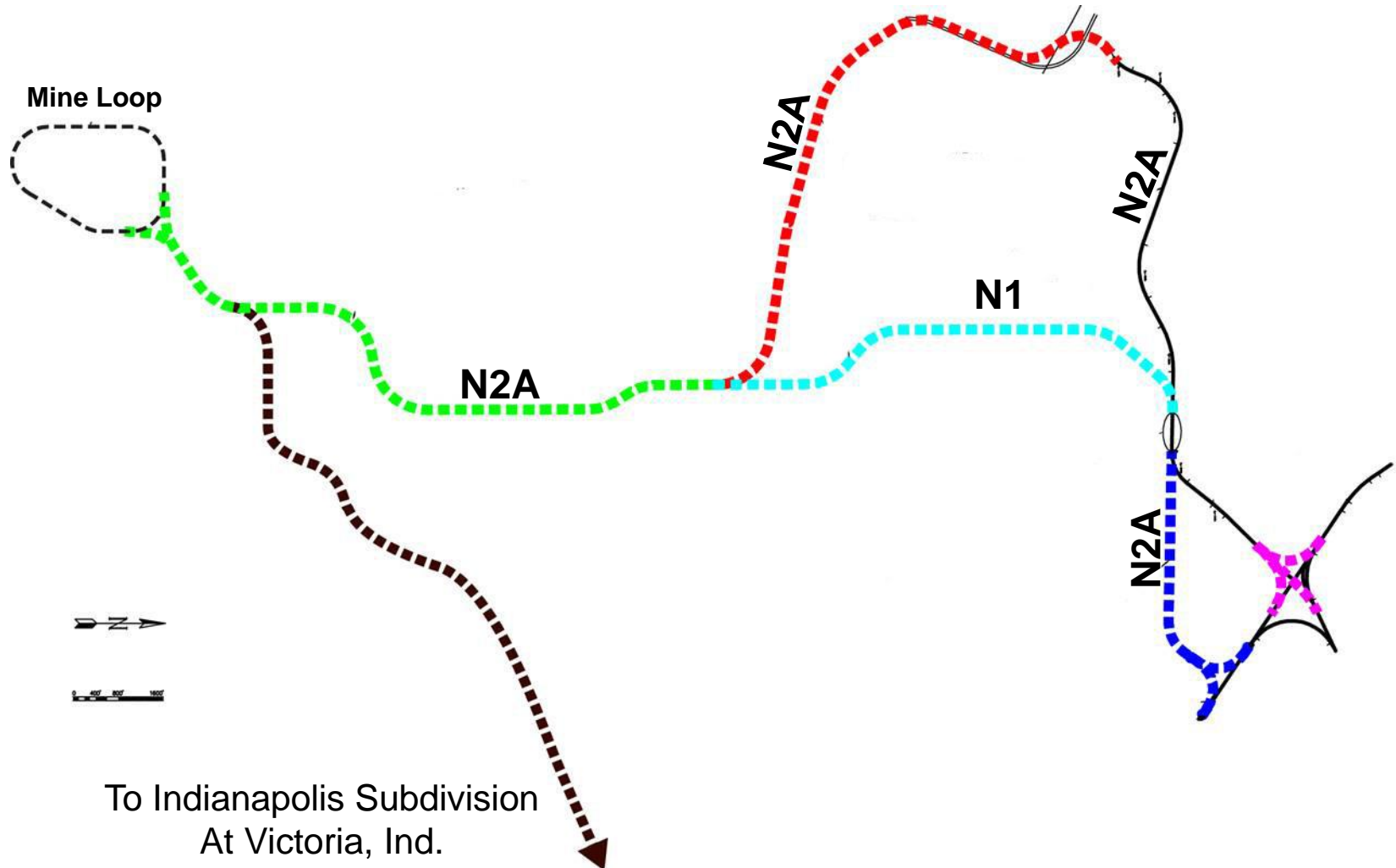
39°02'05.91" N 87°16'06.01" W elev 169 m

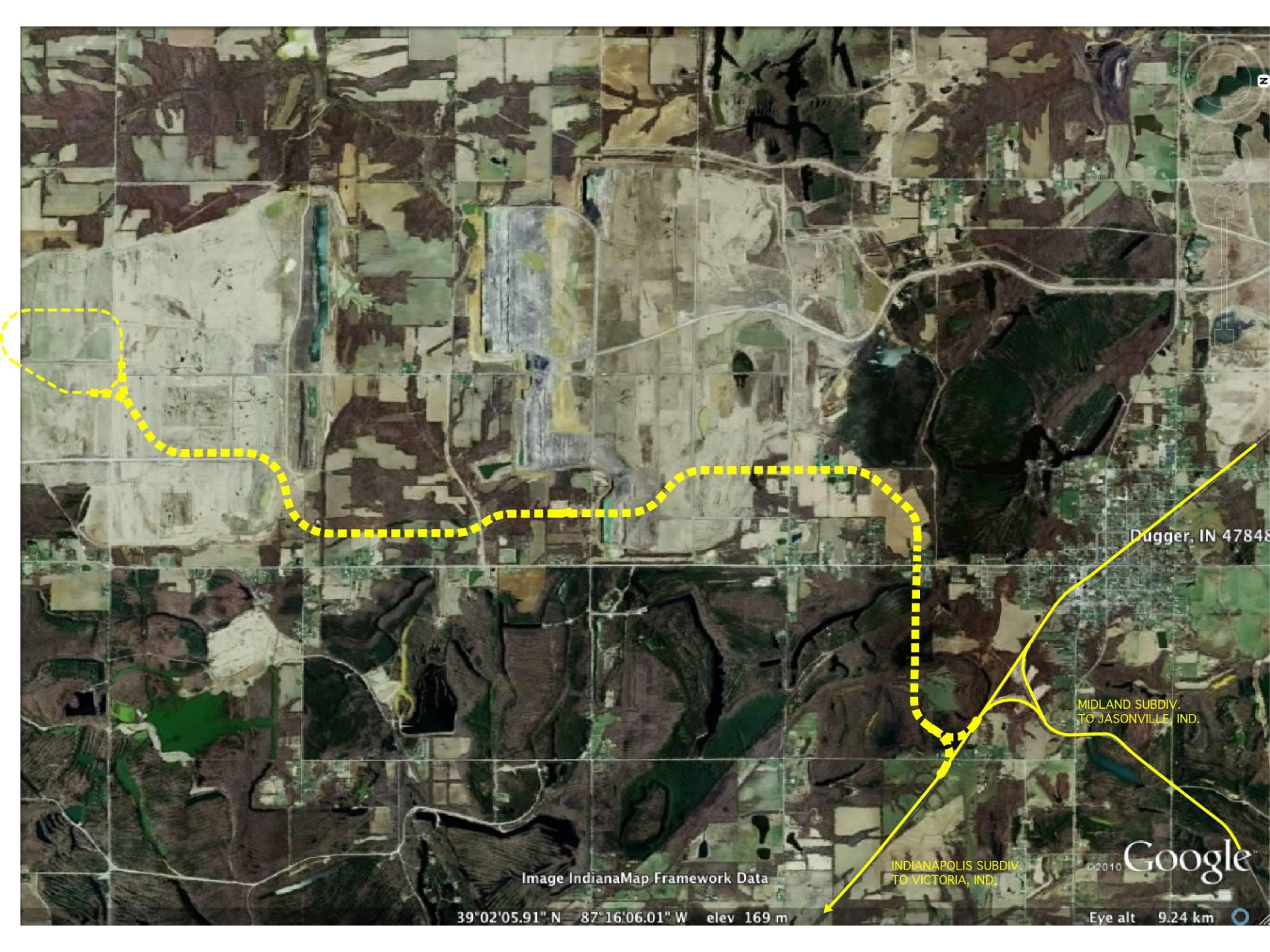
Eye alt 9.24 km

CONCEPTUAL ROUTES

COAL LEAD INTO PEABODY MINE

DUGGER, INDIANA





Dugger, IN 47848

MIDLAND SUBDIV.
TO JASONVILLE, IND.

INDIANAPOLIS SUBDIV.
TO VICTORIA, IND.

Image IndianaMap Framework Data

©2010 Google

39°02'05.91" N 87°16'06.01" W elev 169 m

Eye alt 9.24 km

Permits Required

- United States Army Corps of Engineers 404 Wetland Permit
- Indiana State Wetland Permit
- NPDES Permit (Rule 5)
- County Burn Permit



















