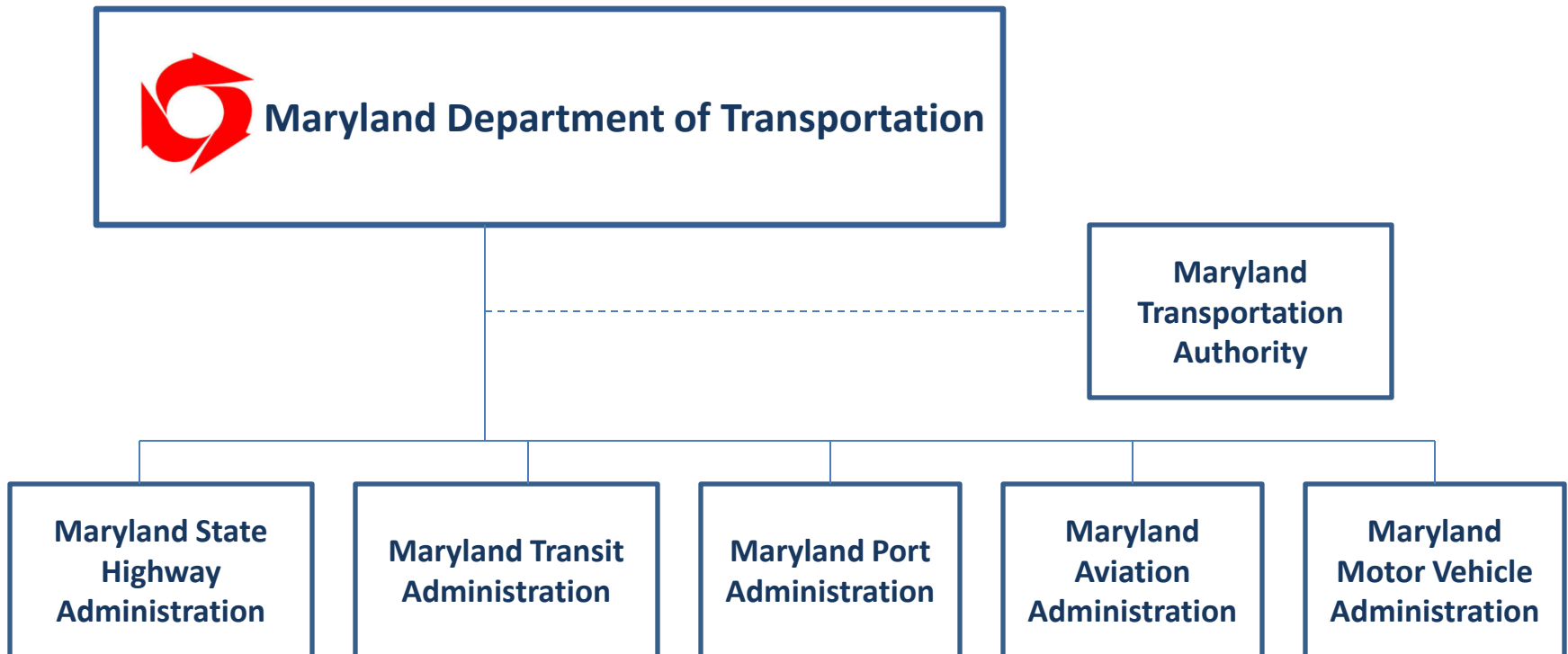


Presentation to the
Pennsylvania Rail Seminar

May 22, 2014

**Maryland's Freight
Rail Efforts**

Overview of Maryland DOT

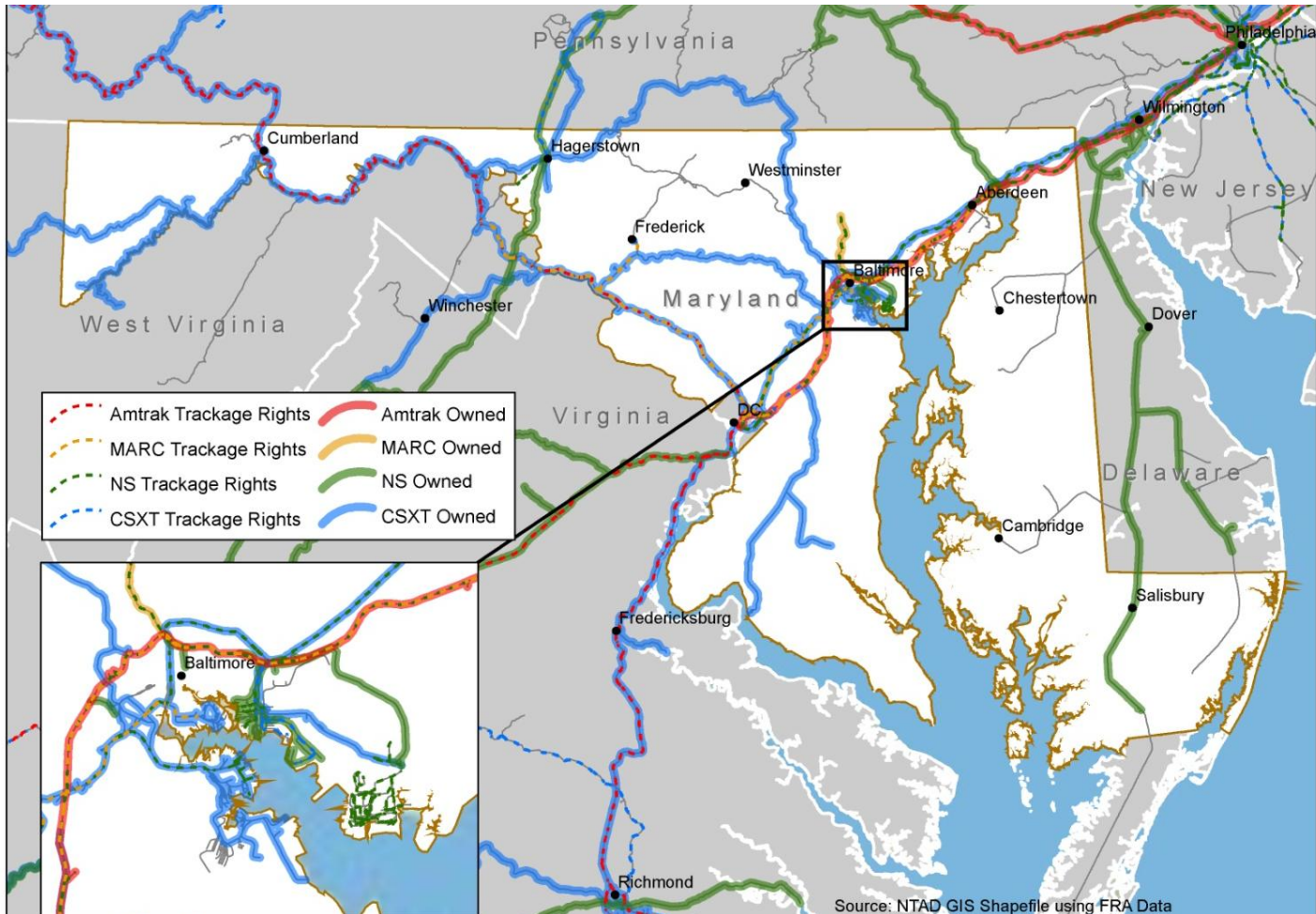


Maryland Freight Rail

- Class I
 - CSX
 - Norfolk Southern
- Short Lines
 - Canton Railroad
 - Bay Coast Railroad
 - Maryland and Delaware Railroad
 - Maryland Midland Railway
 - Baltimore Industrial Railroad



Maryland Class I Rail Map



Maryland Freight Rail Projects

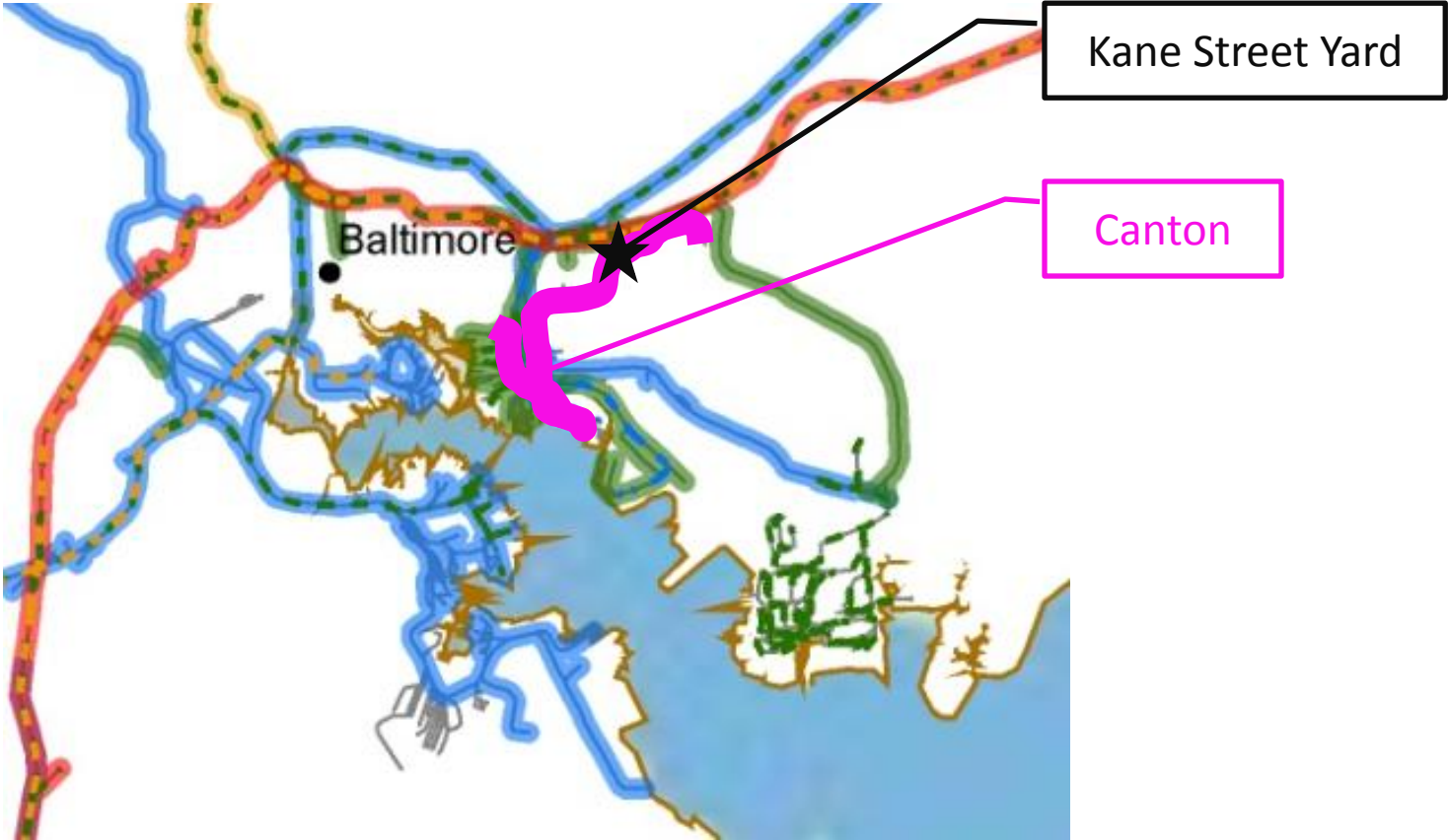
- MDOT is working to progress several freight rail projects throughout the State
- CSX
 - National Gateway
- Norfolk Southern
 - Northeast Corridor projects
- Short Lines
 - Canton Railroad Kane Street Yard

Canton Railroad Company

- MDOT is working with Canton Railroad Company on the development of the Kane Street Yard
- Canton Railroad Company
 - Class III operator serving Port of Baltimore
 - Operates approximately 20 miles of track
 - Direct access to CSX and Norfolk Southern



Canton Railroad Map



Kane Street Yard

- 10-Acre Storage and Switching Yard in eastern Baltimore City
- Once constructed, the project will increase capacity for Canton Railroad and provide quality of life improvements for area residents
 - Reduces horn blowing and blocking of grade crossings
- Canton Railroad has wanted to construct Kane Street Yard for more than a decade but has lacked funds to complete the project

Kane Street Yard – MDOT's Role

- MDOT sponsored Rail Line Relocation and Improvement Capital Grant to the Federal Railroad Administration
 - \$1.7M grant was awarded by FRA
- Providing technical assistance on federal requirements
 - Completed NEPA document for Canton
 - Title VI requirements
- Funding Partner
 - Construction cost increase from original grant estimate
 - MDOT will now contribute \$1M towards construction
- Maryland Transportation Authority will purchase land and lease back to Canton

Importance of Kane Street Yard

- Not a revenue generating project for Canton Railroad, but still critical
- Neighborhood is changing
 - Historically industrial, but gentrification is underway
- Freight movement plays a major role in success of the Port
- This project will balance the needs of the railroad and the community

THANK YOU

Bradley M. Smith, AICP
Project Manager
Office of Freight and Multimodalism
Maryland Department of Transportation
410-865-1097
bsmith9@mdot.state.md.us